



# Thinstuff

## XP/VS Terminal Server

### Thinstuff XP/VS Terminal Server - **NEW! TSX** Session Broker and **TSX** Gateway

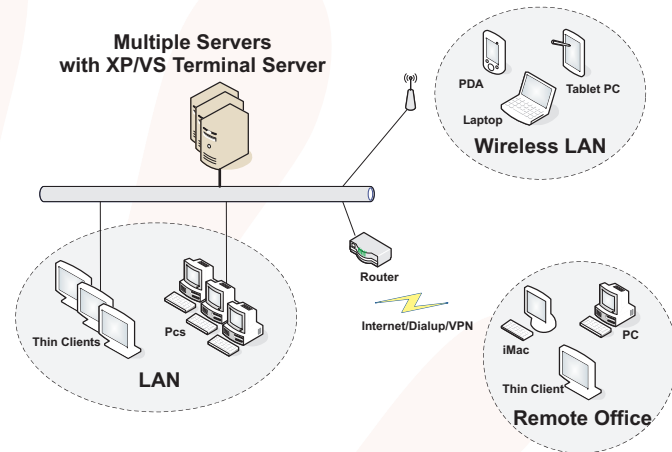
Thinstuff's XP/VS Terminal Server transforms Windows XP, Vista, Small Business Server 2003/2008 or Windows Server 2008 into a full-blown Terminal Server.

#### Turn your Windows workstation into a Terminal Server!

Adding Thinstuff's XP/VS Terminal Server to a Windows workstation enables you to establish an unlimited number of RDP connections to it. This turns your Windows workstation into a complete Terminal Server and enables cost effective Server Based Computing.

#### Cost savings in your IT infrastructure

Deployment of Thinstuff's XP/VS Terminal Server enables cost savings in licensing, hardware, service and support.



## Your Windows becomes a full-blown Terminal Server ... ... with XP/VS Terminal Server

### Thinstuff XP/VS Terminal Server provides even more!

Additional features which make XP/VS Terminal Server a really complete Terminal Server:

- **TSX USB** - Usage of any USB device over the network (USB 1.1. and 2.0)
- **TSX Gateway (RDP VPN Solution)**: Encrypted transmission of the RDP protocol through SSL secured HTTPS connections on port 443 over the internet
- **TSX Session Broker (Load Balancing)**: In multiple Terminal Server environments, incoming RDP sessions are automatically distributed among the Terminal Servers of a load balancing cluster
- **Enhanced Application Compatibility**: Compatibility Mode for older applications which are not Terminal Server enabled (e.g. change user /install, ini file mapping, registry mapping, etc.)
- **Active Directory Domain membership of XP/VS Terminal Server computers**
- **Remote Control (Shadowing)**: Mirroring of RDP sessions for support purposes

The following features are currently under development:

- **TSX Application Control**: Access to specific applications can be restricted to designated groups or users
- **TSX Remote Programs (Seamless Windows)**: Remote Programs offer seamless integration of specific applications into the client's desktop just as if they were local, instead of publishing the complete user desktop
- **TSX Web Access (Web Portal)**: Access to published applications through a web portal

## Trial Version

Free fully featured 14-day version

[www.thinstuff.com/products/xpvs-server/](http://www.thinstuff.com/products/xpvs-server/)

Phone: +43-720-501 281 E-Mail: [sales@thinstuff.com](mailto:sales@thinstuff.com)



The next Dimension of VDI and SBC  
[www.thinstuff.com](http://www.thinstuff.com)

Thinstuff s.r.o.  
Sales Office Austria  
Gaadnerstrasse 61A/3  
A-2371 Hinterbrühl  
Fax: +43-2236-328 311



# Thinstuff

## XP/VS Terminal Server

### System requirements:

#### Hardware:

Minimum requirements for one „Host“ user and one RDP user:

CPU: Min. Pentium IV 1Ghz or better  
RAM: Min. 512MB

Recommended values for each additional RDP user:

CPU: additional 100Mhz  
RAM: additional 64MB

#### Software:

All operating systems which are listed in the below feature comparison table

### Feature comparison:

XP/VS Terminal Server Versions:	Lite	Standard	Professional
<b>x86 (32-Bit) OS Support</b>			
Windows XP Home (RTM, SP1, SP2, SP3)	✓	✓	✓
Windows XP Professional (RTM, SP1, SP2, SP3)	✓	✓	✓
Windows XP Media Center 2005 incl. Rollup 2 (SP2, SP3)	✓	✓	✓
Windows Small Business Server 2003 (RTM, SP1, SP2)	✗	✓	✓
Windows Server 2003 Web / Standard / Enterprise / Datacenter (RTM, SP1, SP2)	✗	✓	✓
Windows Vista Home Basic / Home Premium X86 (RTM, SP1, SP2)	✓	✓	✓
Windows Vista Business / Ultimate / Enterprise X86 (RTM, SP1, SP2)	✓	✓	✓
Windows Server 2008 Web / Standard / Enterprise / Datacenter (SP1, SP2)	✗	✓	✓
<b>x64 (64-Bit) OS Support</b>			
Windows XP Professional x64 (SP1, SP2)	✓	✓	✓
Windows Server 2003 x64 Web / Standard / Enterprise / Datacenter (SP1, SP2)	✗	✓	✓
Windows Vista Home Basic / Home Premium x64 (RTM, SP1, SP2)	✓	✓	✓
Windows Vista Business / Ultimate / Enterprise x64 (RTM, SP1, SP2)	✓	✓	✓
Windows Server 2008 x64 Web / Standard / Enterprise / Datacenter (SP1, SP2)	✗	✓	✓
Windows Small Business Server 2008 (SP1, SP2) x64	✗	✓	✓
<b>Features</b>			
<b>Remote Control</b>	✓	✓	✓
Mirroring of RDP sessions for support purposes	✓	✓	✓
<b>Active Directory Domain membership of XP/VS Terminal Server computers</b>			
Windows Active Directory Domain membership of XP/VS Terminal Server computers to allow domain authentication of Remote Desktop users (XP/VS Terminal Server Lite only supports computers which are members of Windows Workgroup environments)	✗	✓	✓
<b>Enhanced Application Compatibility</b>			
Compatibility mode for older applications which are not Terminal Server capable - e.g. change user /install, ini file mapping, registry mapping, etc.	✗	✓	✓
<b>TSX USB</b>			
(USB redirection)	✗	✗	✓
<b>TSX Gateway (RDP over HTTPS)</b>			
Compatible with Microsoft RDP6 Client	✗	✓ (July 2009)	✓ (July 2009)
<b>TSX Remote Programs (seamless windows)</b>			
	✗	✓ (August 2009)	✓ (August 2009)
<b>TSX Application Control (rights management for Remote Programs)</b>			
	✗	✓ (August 2009)	✓ (August 2009)
<b>TSX Web Access (web portal)</b>			
	✗	✓ (September 2009)	✓ (September 2009)
<b>TSX Session Broker (load balancing)</b>			
Compatible with Microsoft RDP6 Client	✗	✓	✓
	✓	supported	
	✓	under development	
	✗	not available	

